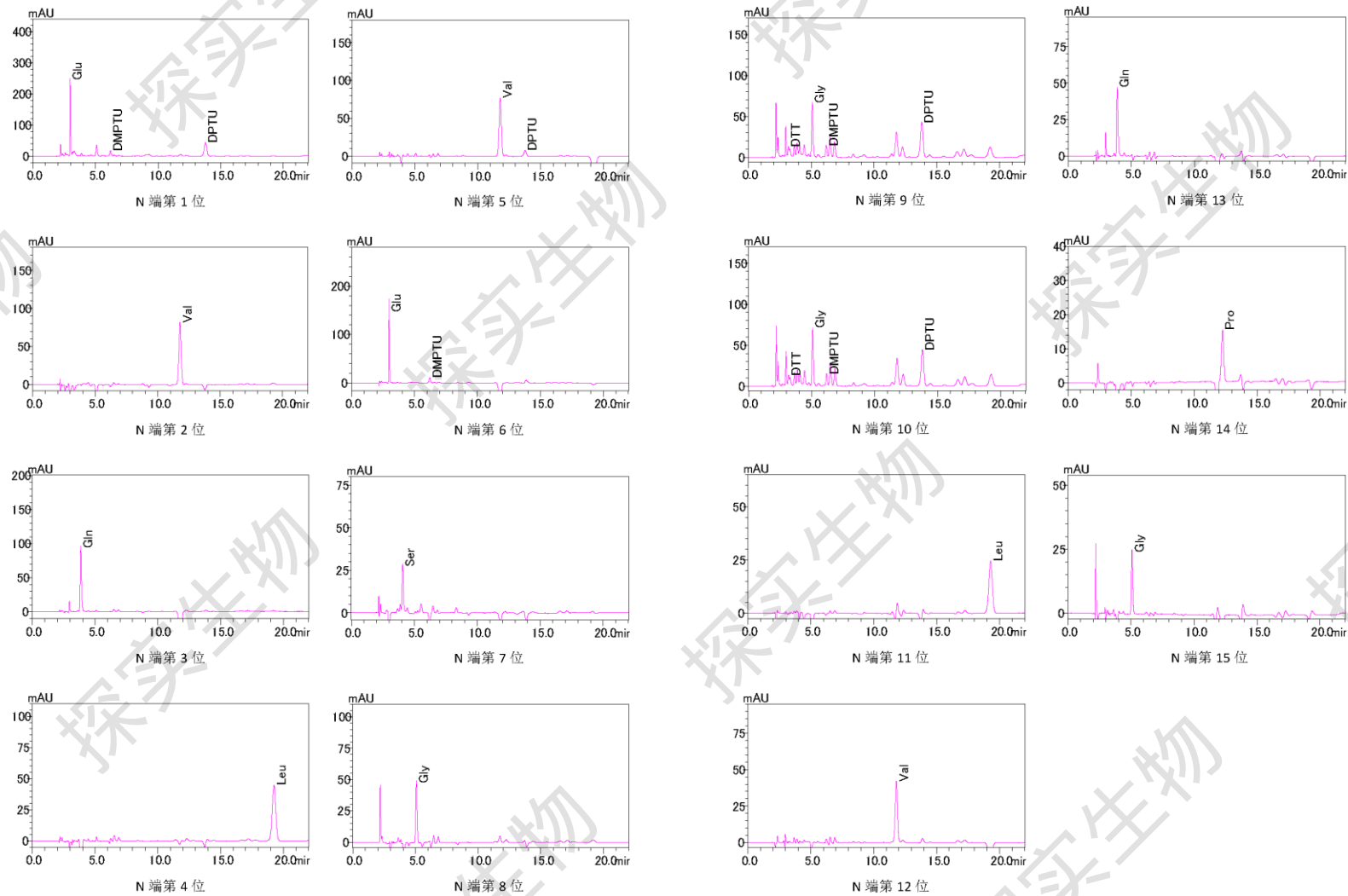


Edman-N端测序分析

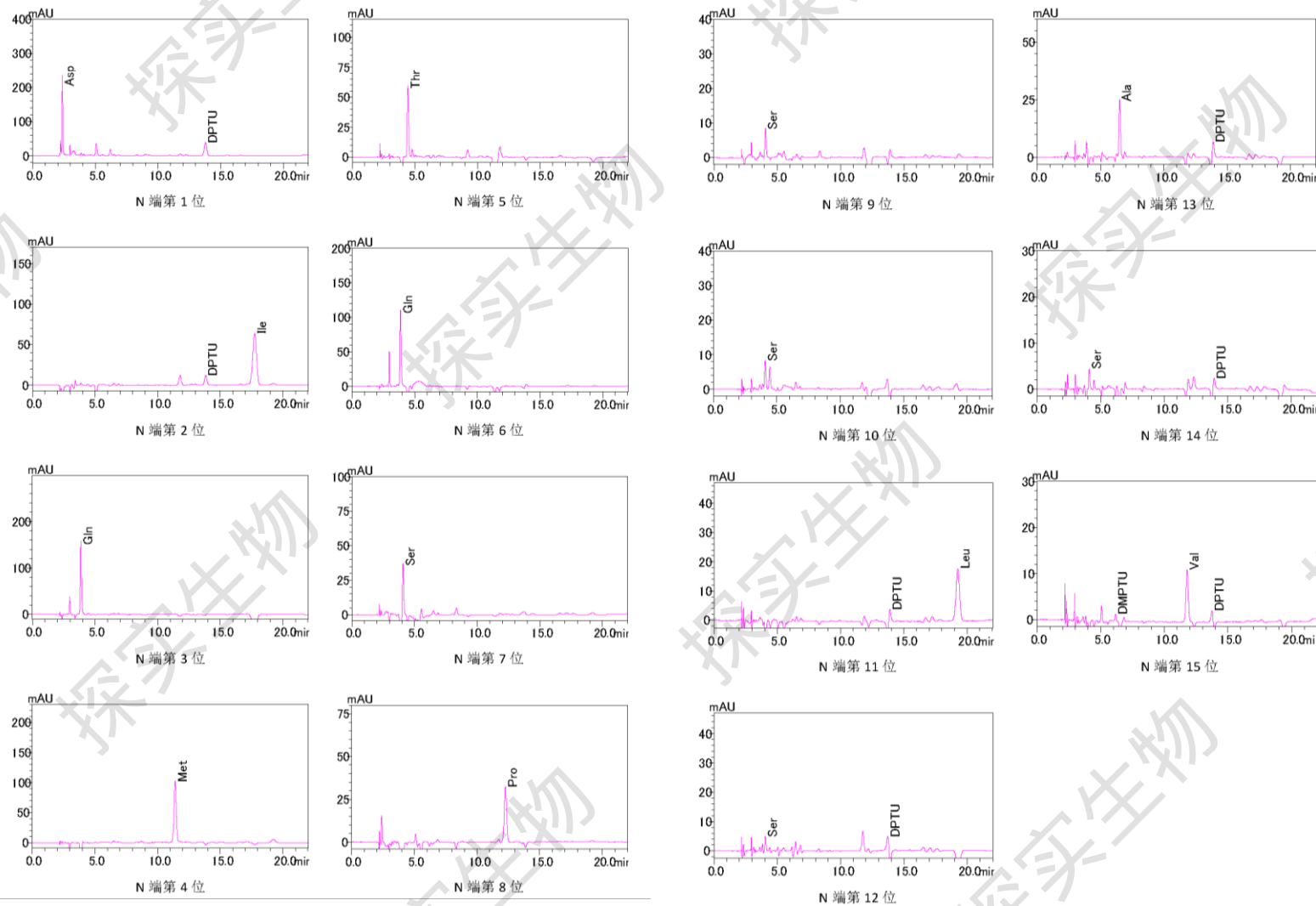
IgG1重链



循环数	理论序列	实测序列
1	Glu	Glu
2	Val	Val
3	Gln	Gln
4	Leu	Leu
5	Val	Val
6	Glu	Glu
7	Ser	Ser
8	Gly	Gly
9	Gly	Gly
10	Gly	Gly
11	Leu	Leu
12	Val	Val
13	Gln	Gln
14	Pro	Pro
15	Gly	Gly

Edman-N端测序分析

IgG1轻链



循环数	理论序列	实测序列
1	Asp	Asp
2	Ile	Ile
3	Gln	Gln
4	Met	Met
5	Thr	Thr
6	Gln	Gln
7	Ser	Ser
8	Pro	Pro
9	Ser	Ser
10	Ser	Ser
11	Leu	Leu
12	Ser	Ser
13	Ala	Ala
14	Ser	Ser
15	Val	Val